

b



bus

u



bus

s



bus

h



hut

u



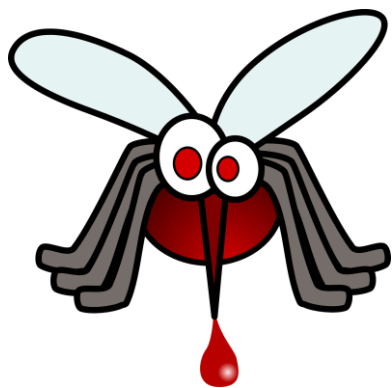
hut

t



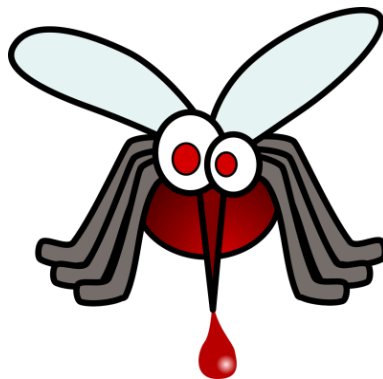
hut

m



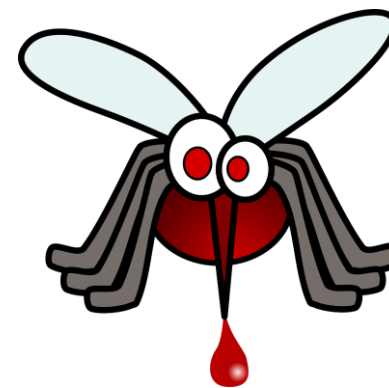
mug

u



mug

g



mug

m



mus

u



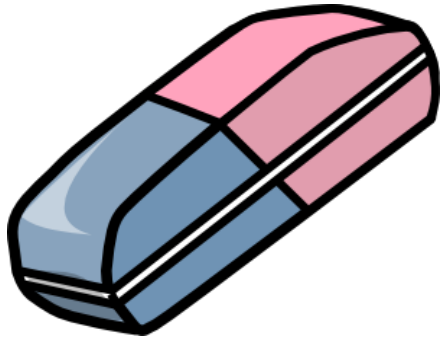
mus

s



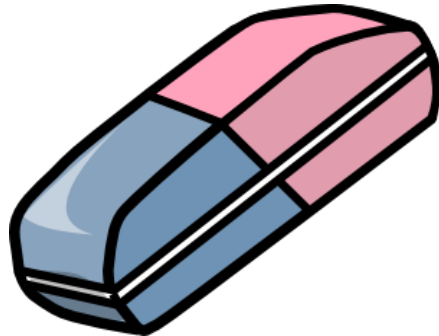
mus

g



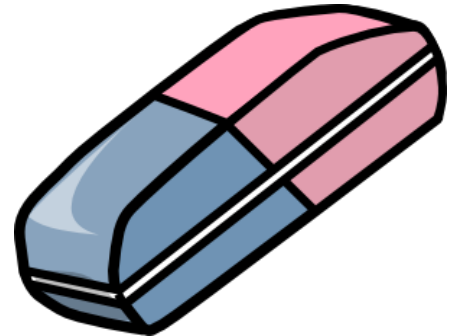
gum

u



gum

m



gum

j



juf

u



juf

f



juf

k



kus

u



kus

s



kus

p



put

u



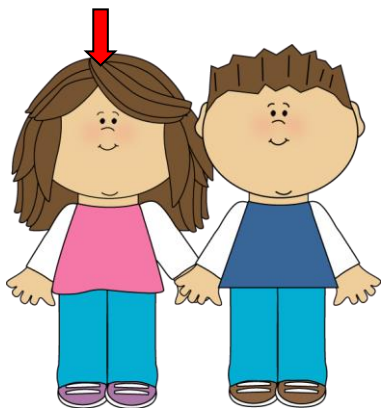
put

t



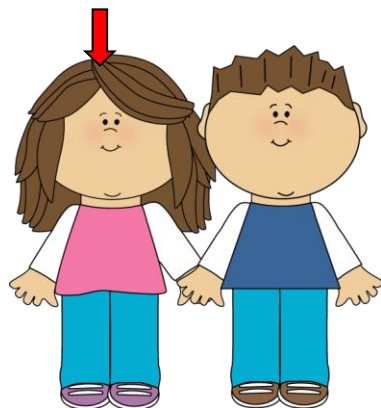
put

z



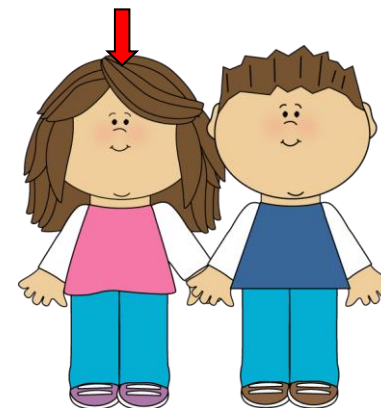
zUS

u



zUS

s



zUS